

CITY OF BLOOMINGTON

# Bicentennial Bond Tree Planting

*February 2022*



# New Trees for Bloomington

- Trees to be planted along streets and in public right-of-way, these become City trees
- Trees planted by a selected contractor, with project management by the City of Bloomington Parks and Recreation Department



# \$970k

Annual economic contribution to  
Bloomington from the Urban Forest



## \$4 benefit per \$1 cost

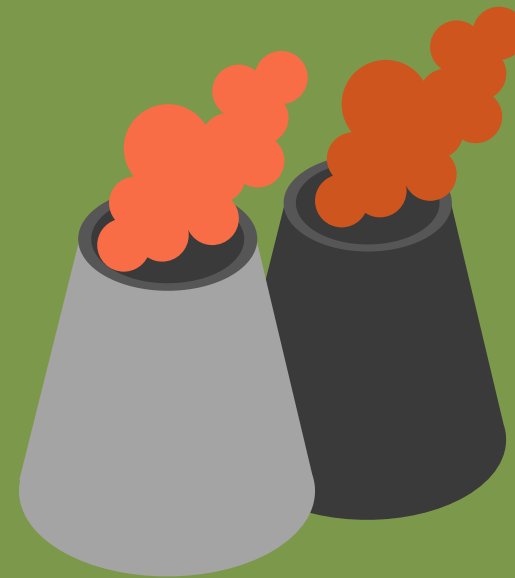
Benefit cost ratio to the community

## \$51/tree annually

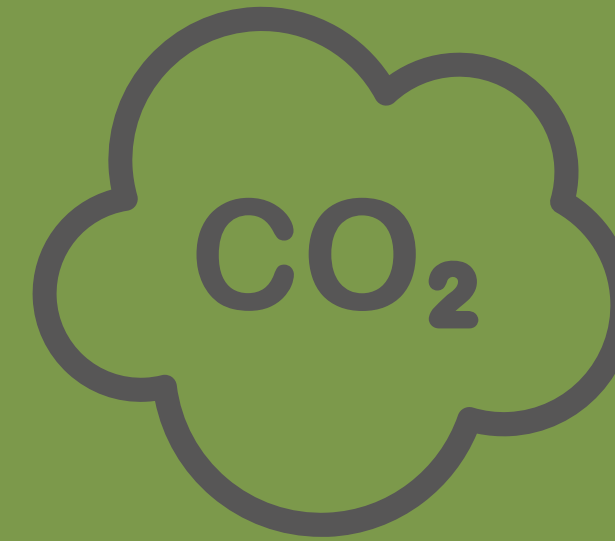
Average annual benefit per tree

# Benefits

Annual economic contribution from Urban Forests



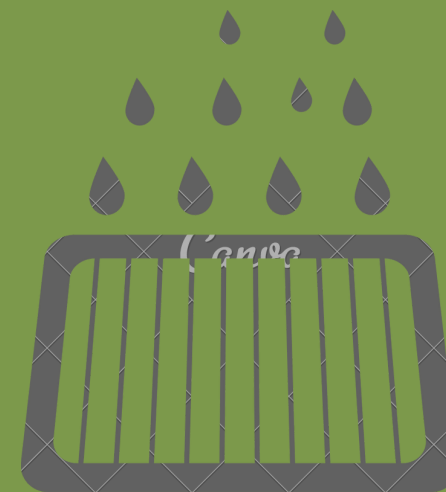
Air Pollution



Carbon  
Storage/Sequestration



Energy Savings



Stormwater



Aesthetic/other

# Other Benefits



## Shoppers Spend More Time and Money

When surveyed shoppers reported they would spend 9 - 12% higher in goods in a business area with quality tree canopy

Foot traffic can be increased with improved streetscapes that include trees

## Increases Home Values

Large trees in yards and as streets trees can add 3 - 15% to home values in a neighborhood.



## Safer Communities

Residential neighborhoods with trees in right-of-way and had lots of vegetation have less frequent property crimes

Wolf, K. (2021). Green Cities: Good Health.  
Retrieved 4 August 2021, from  
<http://depts.washington.edu/hhwb/>

# Project Background

## *Bicentennial Bond*

Mayor Hamilton issued series of Bicentennial Bonds in 2018, included \$800k to plant trees along streets and in public right-of-ways

## *Davey Resource Group City-wide Tree Inventory*

Davey Resource Group conducted a city-wide inventory of City trees, located in Parks, along streets, and public right-of-ways. Included identification of vacant planting sites in these areas.

## *Identification of Project Areas and Initial Site Evaluations*

Parks and Recreation department staff identified larger project areas utilizing information from the 2019 Davey Resource Group Canopy Assessment, identified vacant planting sites, and socio-economic characteristics of project areas to prioritize public tree planting needs.



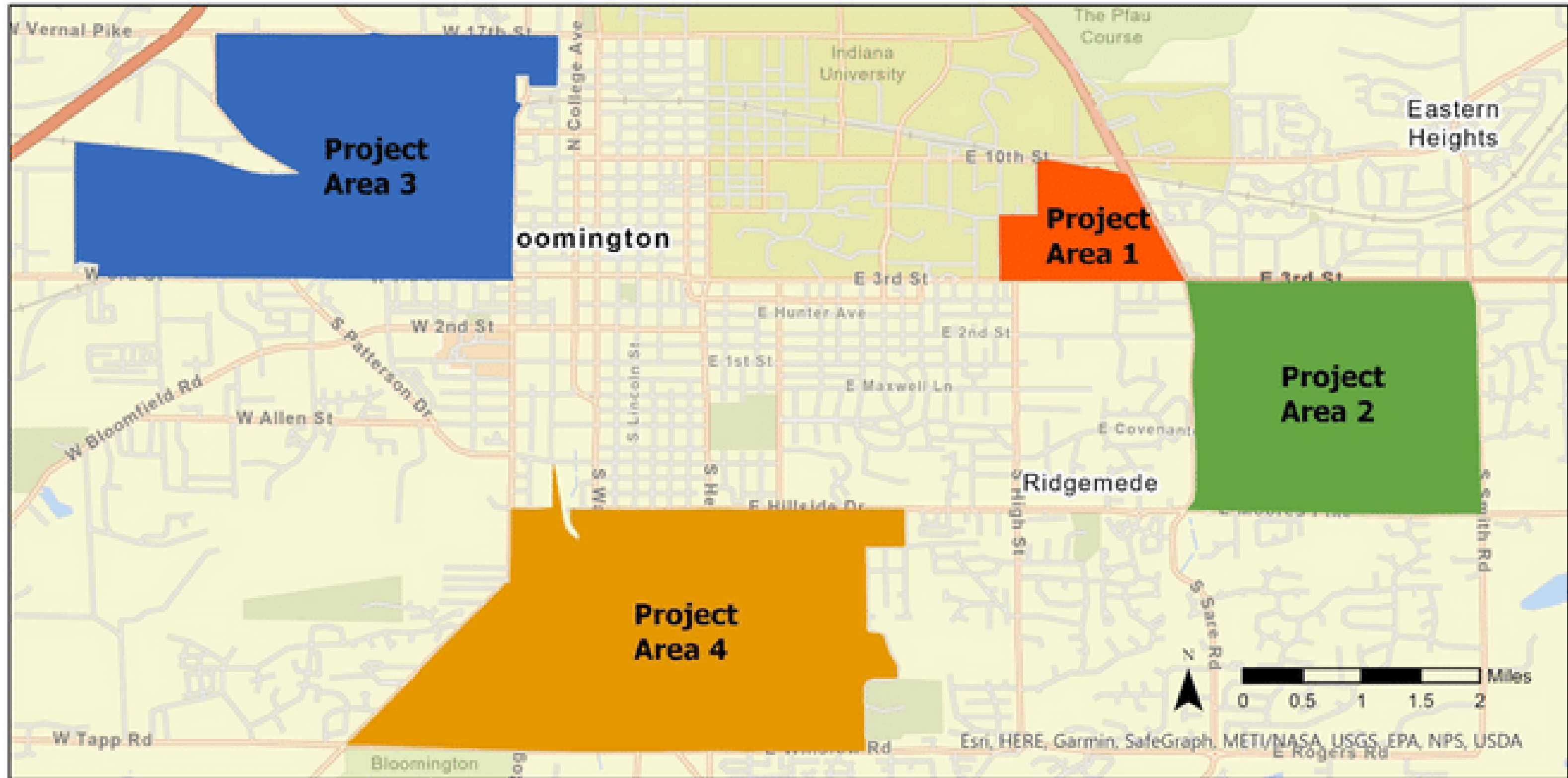
# Planting Site Selection Process

*Looked at Inventoried Vacant Sites from 2019 Davey Resource Group City Wide Tree Inventory*

*Identify larger project areas with a high amount of vacant sites, higher potential canopy, lower existing canopy, and socio-economic characteristics. Also consider needs like heat island and flooding potential.*

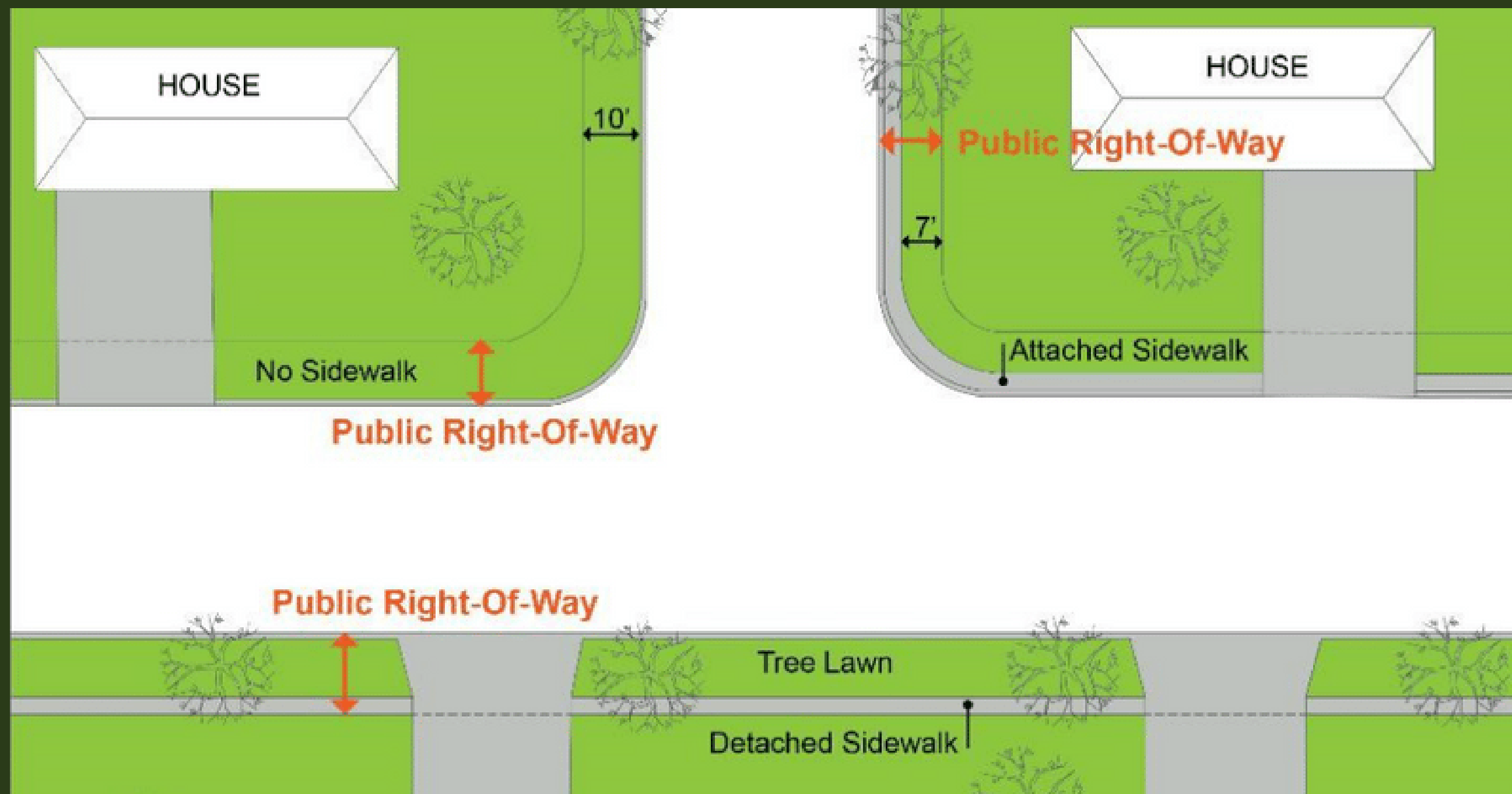
*Call 811 - Locate Utilities to narrow down specific sites*

**Collect Community Feedback on Specific Sites**



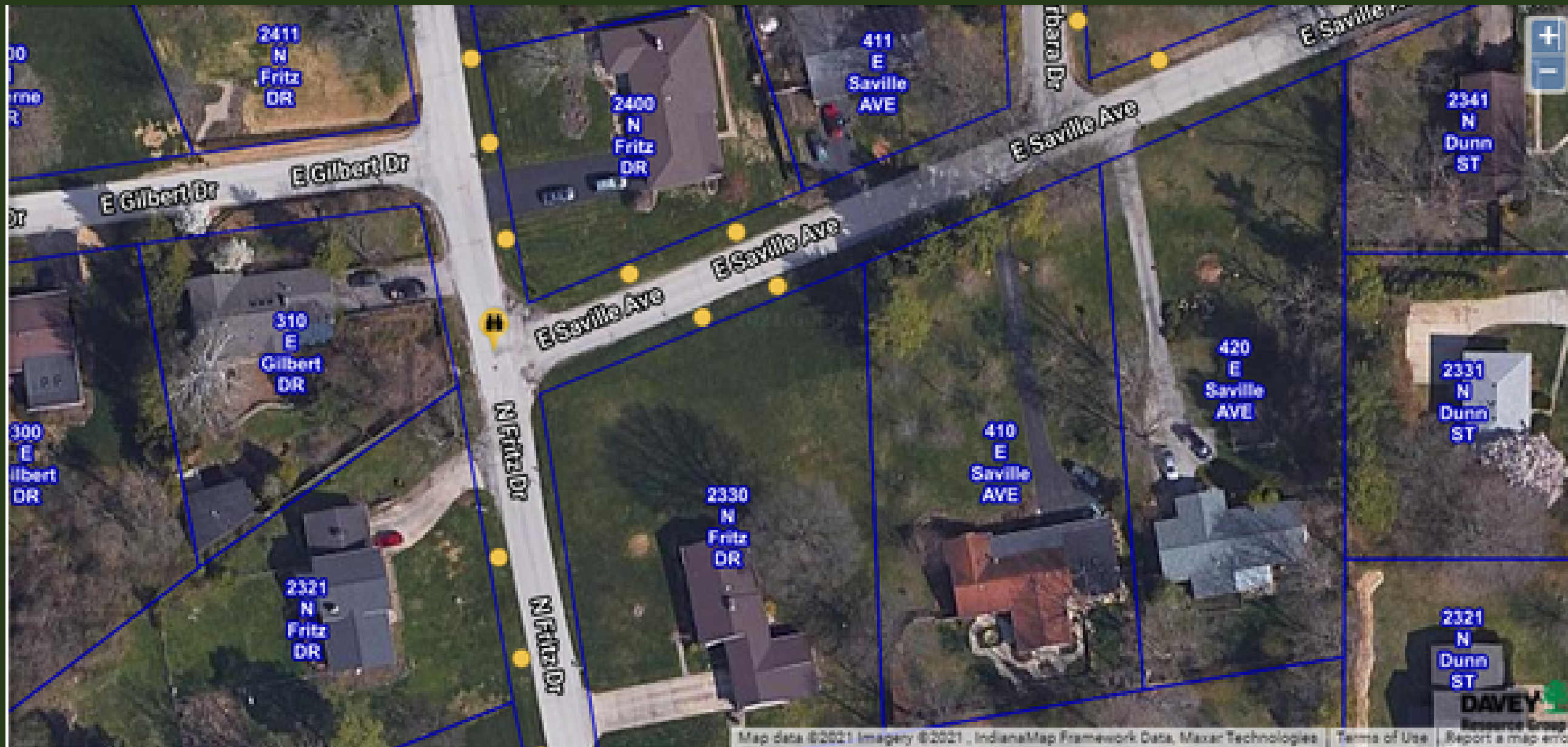
# Bicentennial Bond Planting Project Area Map

**<https://bloomingtonin.treekeepersoftware.com/>**



## PUBLIC RIGHT-OF-WAY

Where the City can plant trees, these are city trees.



## PUBLIC ROW - WHAT ABOUT WHEN YOU DON'T HAVE A SIDEWALK?

Where the City can plant trees, these are city tree.

*How many City trees aren't in a tree lawn/planting strip?*

27% in tree lawns  
28% in open ROWs  
39% in Parks  
5% in Tree Pits  
<1% in Medians

**\*\*From a sample of 6344 inventoried existing trees, from a total of 20,991 inventoried existing trees; approx. 30%**

# Cities with Open ROW Tree Plantings



Hamilton, OH



Durham, NC



Bowling Green, OH



Iowa City, IA



Normal, IL



Shoreline, WA



Des Moines, IA

# Project Timeline

- Early Feb. Public Notices via: postcards, press release, emails to neighborhood associations, posting on Nextdoor
- Contract to be seen for approval Feb 22nd at Board of Park Commissioners
- Deadline for feedback Feb. 28th
- Specific list of tree planting site provided to contractor after evaluation of feedback
- April/May 2022 Tree purchasing and planting for majority of project areas
- October/November 2022 Tree purchasing and planting for remainder of project areas
- November 2022; April/May 2023 Six-month post-planting visits
- November 2023; April/May 2024 Six-month post-planting visits

## Small Trees

*Amelanchier laevis*  
(Allegheny Serviceberry)

*Amelanchier x grandiflora*  
(Hybrid Serviceberry)

*Cercis Canadensis*  
(Redbud)

*Cornus florida*  
(Flowering Dogwood)

*Carpinus caroliniana*  
(American hornbeam)

## Medium Trees

*Betula nigra*  
(River Birch)

*Cladrastis lutea*  
(Yellowwood)

*Ostrya virginiana*  
(American Hophornbeam)

*Quercus stellata*  
(Post Oak)

## Large Trees

*Celtis occidentalis*  
(Hackberry)

*Gymnocladus dioica*  
(Kentucky Coffeetree)

*Tilia americana*  
(American Linden)

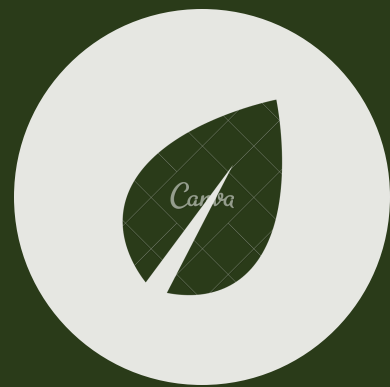
*Nyssa sylvatica*  
(Blackgum)

*Quercus alba*  
(White Oak)

*Quercus bicolor*  
(Swamp White Oak)

*Quercus shumardii*  
(Shumard Oak)

*Ulmus hybrids*  
Elm hybrids



## *White Oak*

- Large tree: Height= up to 80'. Spread = up to 70'
- Deciduous
- Glossy green leaves and acorns



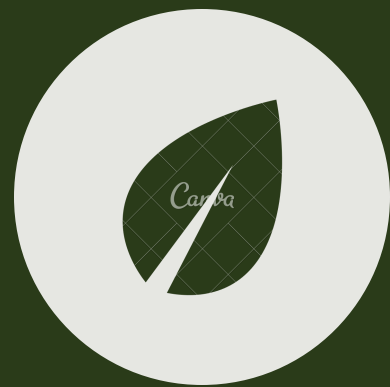
## *Shumard Oak*

- Large tree: Height = up to 60', Spread = up to 40'
- Deciduous, native
- Nice fall color



## *Kentucky Coffeetree*

- Large tree: Height = up to 100', Spread = up to 40'
- Deciduous, native
- Compound leaves



## Apple Serviceberry

- Small tree: Height= up to 25'. Spread = up to 25'
- Deciduous
- Cross between downy serviceberry and allegheny serviceberry



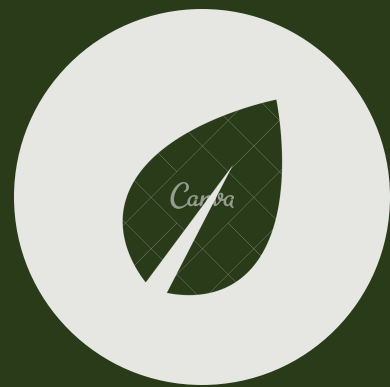
## Redbud

- Small tree: Height = up to 35', Spread = up to 35'
- Deciduous, native
- Nice fall color and flowers



## Elm

- Large/Medium tree: Height = up to 50', Spread = up to 40'
- Deciduous
- 'Frontier', 'Homestead', 'New Horizon', or 'Patriot' cultivars, DED resistant



## *Before Planting*

### *Prep sites*

Conduct additionally 811 calls, mark sites for planting



## *Day of Planting*

### *Contractor planting*

Drop off trees, dig holes, plant, mulch, stake, and water as needed



## *Follow-up*

### *Contractor*

Conduct 6-month and 18-month follow-up visits to adjust hardware, check planting, and conduct structural/training pruning

# Community Feedback

1) Check if your home is slated to have trees planted, you can see the specific tree planting sites on a map on TreeKeeper. Go to either:

<https://bloomington.in.gov/about/trees/bicentennial-bond-project>

<https://bloomingtonin.treekeepersoftware.com/index.cfm?reportID=38>

2) Submit feedback, objections, species preferences via the feedback form on the project webpage. Feedback will be evaluated and staff will advise changes to the selected project contractor.



# Contact Us

*Erin Hatch, Urban Forester  
City of Bloomington*

*Email Address*

[erin.hatch@bloomington.in.gov](mailto:erin.hatch@bloomington.in.gov)

*Phone Number*

(812) 349 - 3716

*Tim Street, Operations & Development Division Director  
City of Bloomington*

*Email Address*

[tim.street@bloomington.in.gov](mailto:tim.street@bloomington.in.gov)